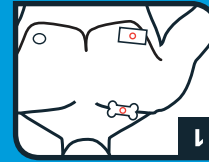


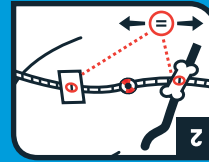
**1a:** On the injured side, identify the landmarks of the mid-clavicular line.

**1b:** Feel the backing and place the bone shaped sticker on the center of the collar bone.

**1c:** Feel the backing and place the square sticker on the nipple (MALES), top center of the breast (FEMALES).

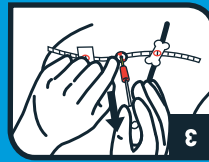


**2:** Slide the Dart Target strip until the numbers in the windows match.



**3:** Use the Dart according to TCCG guide-lines at the anatomical location indicated by the Dart Target. Insert the Dart at a 90° angle to the patient, ensuring placement above the rib.

Reassess.



# DART TARGET™ CHEST DECOMPRESSION SET

1ea—placement template; 1ea sterile, 14 gauge x 3.25", needle/catheter for chest decompression



Combat Medical  
5555 Harrisburg Industrial Park Drive  
Harrisburg, NC 28075 USA  
1-855-428-6074  
[www.combatmedical.com](http://www.combatmedical.com)

REF 21-011 CMS-PUB-DTCDSI-04-002

Pat. Info: [combatmedicalsistemas.com/ip](http://combatmedicalsistemas.com/ip)  
© 2019 Combat Medical Systems, LLC



Made in USA



**WARNINGS:** For use by trained medical providers. Once applied, patient should be monitored. Dispose of soiled material per biohazard waste guidelines.