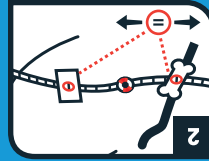




1a: On the injured side, identify the landmarks of the mid-clavicular line.

1b: The center of the clavical (collar bone)

1c: Females: The top center of breast.

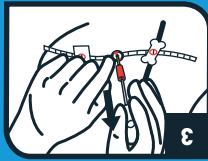


2a: Peel and place the DartTarget's bone shaped sticker mid-clavicle on the injured side.

2b: Males: Peel and place square tab on nipple.

Females: Peel and place square tab on the top center of breast.

2c: Slide Dart Target strip until numbers in windows match.



3: Use the MojoDart according to TCCG guidelines at the anatomical location indicated by the Dart Target. Insert the MojoDart at a 90° angle to the patient, ensuring placement above the rib.

Reassess.

DART TARGET™ CHEST DECOMPRESSION SET

1ea-placement template; 1ea sterile, 14 gauge x 3.25", needle / catheter for chest decompression



Combat Medical
5555 Harrisburg Industrial Park Drive
Harrisburg, NC 28075 USA
1-855-428-6074
www.combatmedicalsyste.ms.com

REF 21-011 CMS-PUB-DTCDS-04-001

Pat. Info: combatmedicalsyste.ms.com/ip
© 2015 Combat Medical Systems, LLC



Made in USA



WARNINGS: For use by trained medical providers. Once applied, patient should be monitored. Dispose of soiled material per biohazard waste guidelines.